



Mental Health
Commission
of Canada

Commission de
la santé mentale
du Canada

Ghost in the machine: Tackling structural stigma in health-care environments

February 9th, 2021

Thank you for joining us! The webinar will begin shortly.

ORDER OF EXCELLENCE



MENTAL HEALTH AT WORK® RECIPIENT

Host



Nicholas Watters

Director, Access to Quality Mental Health Services
Mental Health Commission of Canada

Speakers



Dr. Heather Stuart

Professor, Department of Public Health
Sciences, Queen's University
Bell Canada Mental Health and Anti-
stigma Research Chair



Dr. Jamie Livingston

Associate Professor, Department
of Criminology, Saint Mary's
University

Speakers



Dr. Javeed Sukhera

Associate Professor of
Psychiatry/Paediatrics Scientist, Centre
for Education Research & Innovation,
Schulich School of Medicine &
Dentistry, Western University



Dr. Stephanie Knaak

Senior Research Consultant, Mental
Health Commission of Canada
Assistant Professor, Department of
Psychiatry, University of Calgary

Speakers



Dr. Thomas Ungar

Associate Professor, University of Toronto
Associate Scientist, Li Ka Shing Knowledge Institute
Psychiatrist-in-Chief, St. Michael's Hospital

Agenda

- MHCC and our work in stigma
- What is Structural Stigma?
- Panelist Presentations
- Q & A

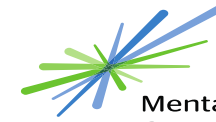
About the MHCC



CHANGING DIRECTIONS
CHANGING LIVES

The Mental Health Strategy for Canada





Mental Health
Commission
of Canada

Commission de
la santé mentale
du Canada

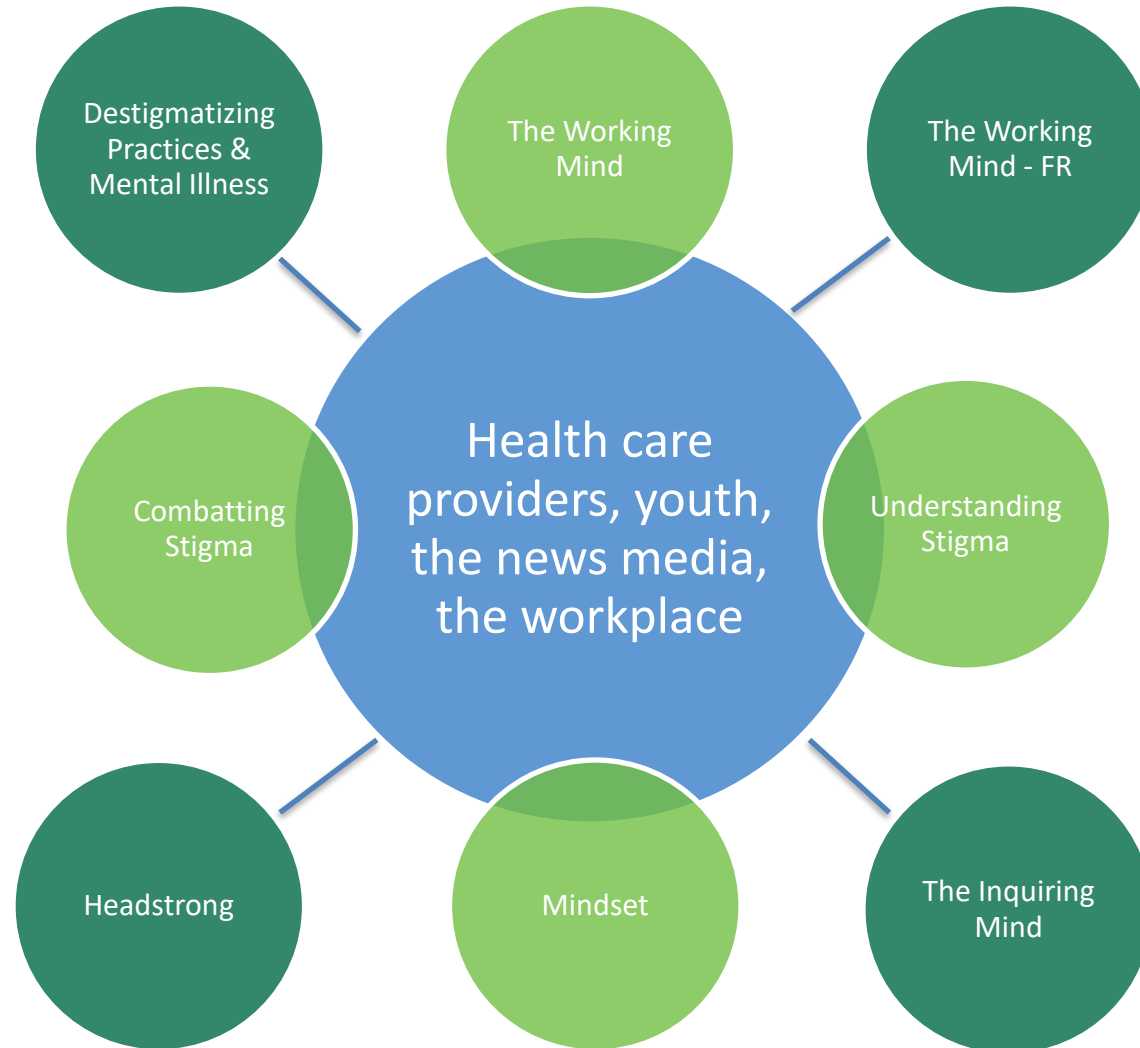
Our Work In Stigma

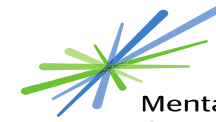
Opening Minds

Mental health stigma reduction initiative established by the MHCC in 2009



Opening Minds





Mental Health
Commission
of Canada

Commission de
la santé mentale
du Canada

Structural Stigma

What is stigma

Stereotypes

Labels & language

Prejudice

Discrimination

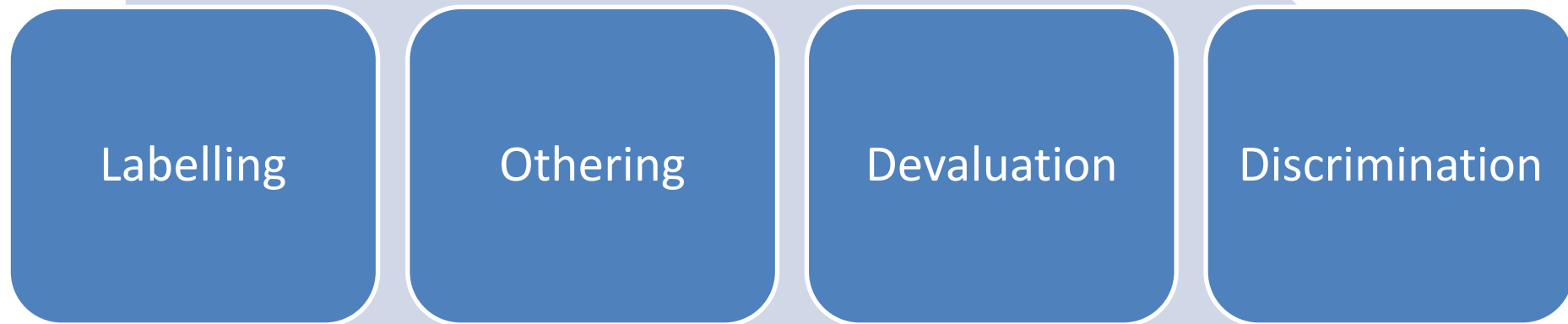
Negative attitudes

Unjust policies, laws,
institutional practices

Seeing someone
as 'less than'

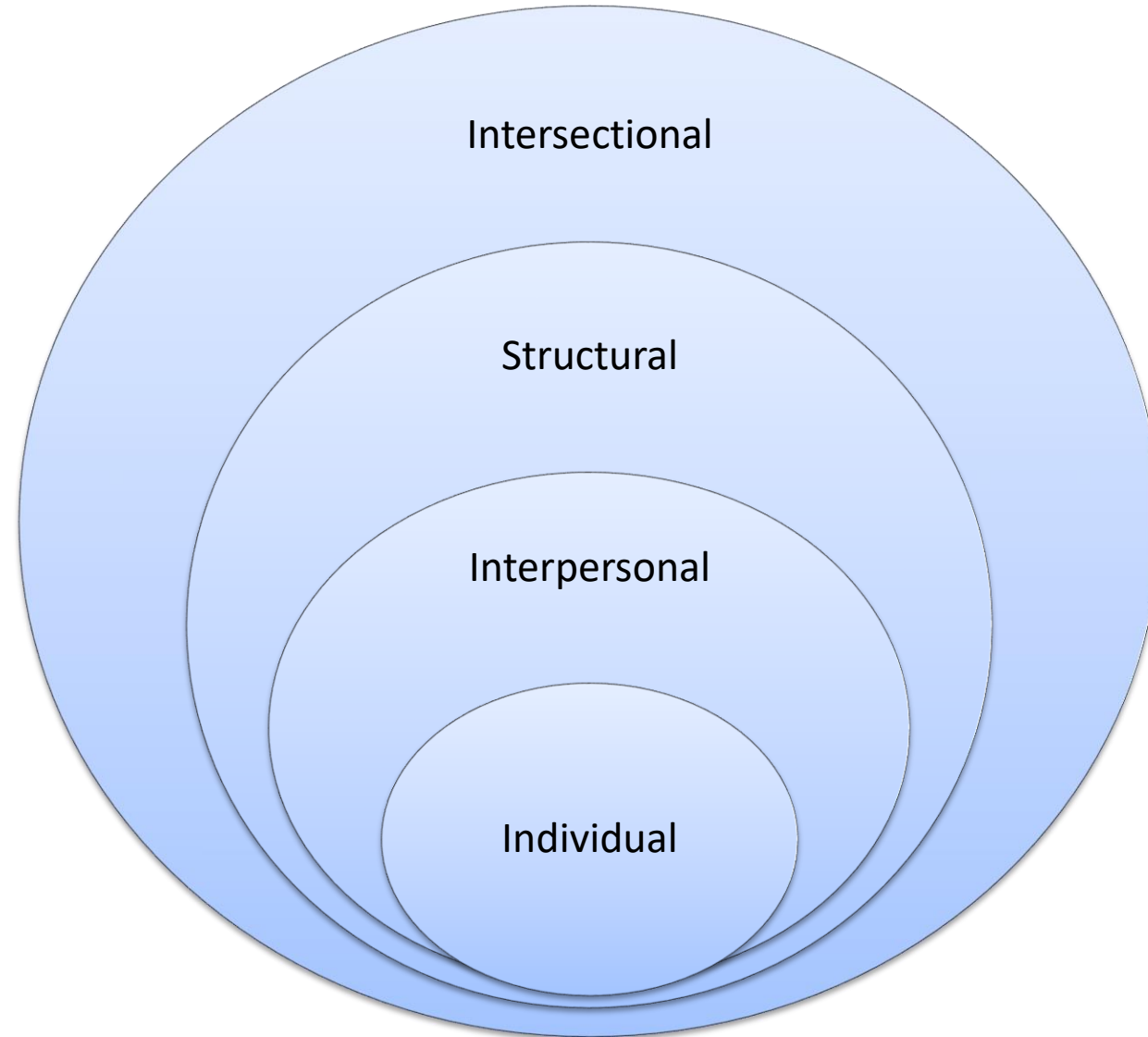
How stigma works

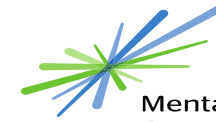
Stigma is a social process



Needs power to exist

Levels of Stigma



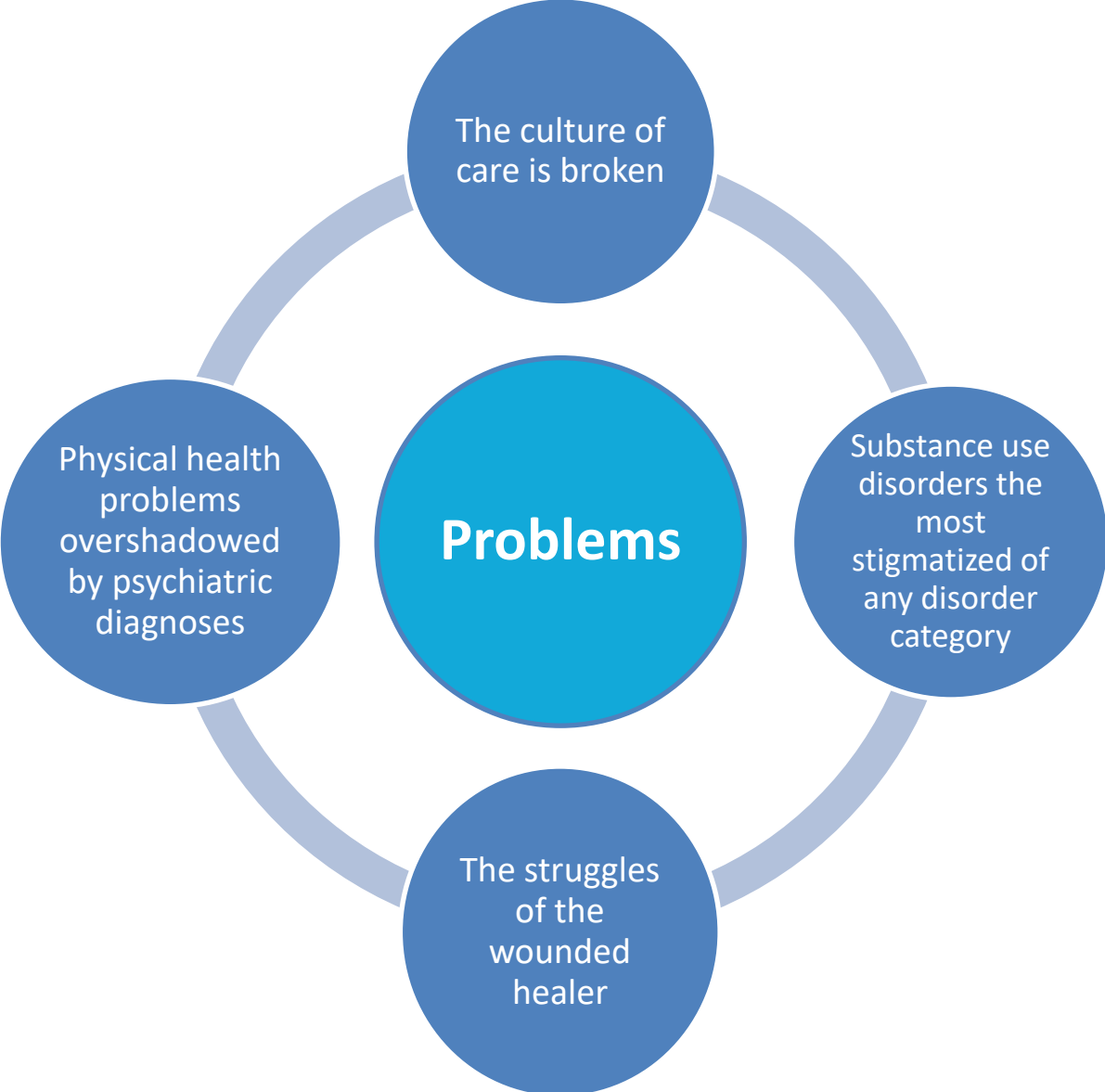


Mental Health
Commission
of Canada

Commission de
la santé mentale
du Canada

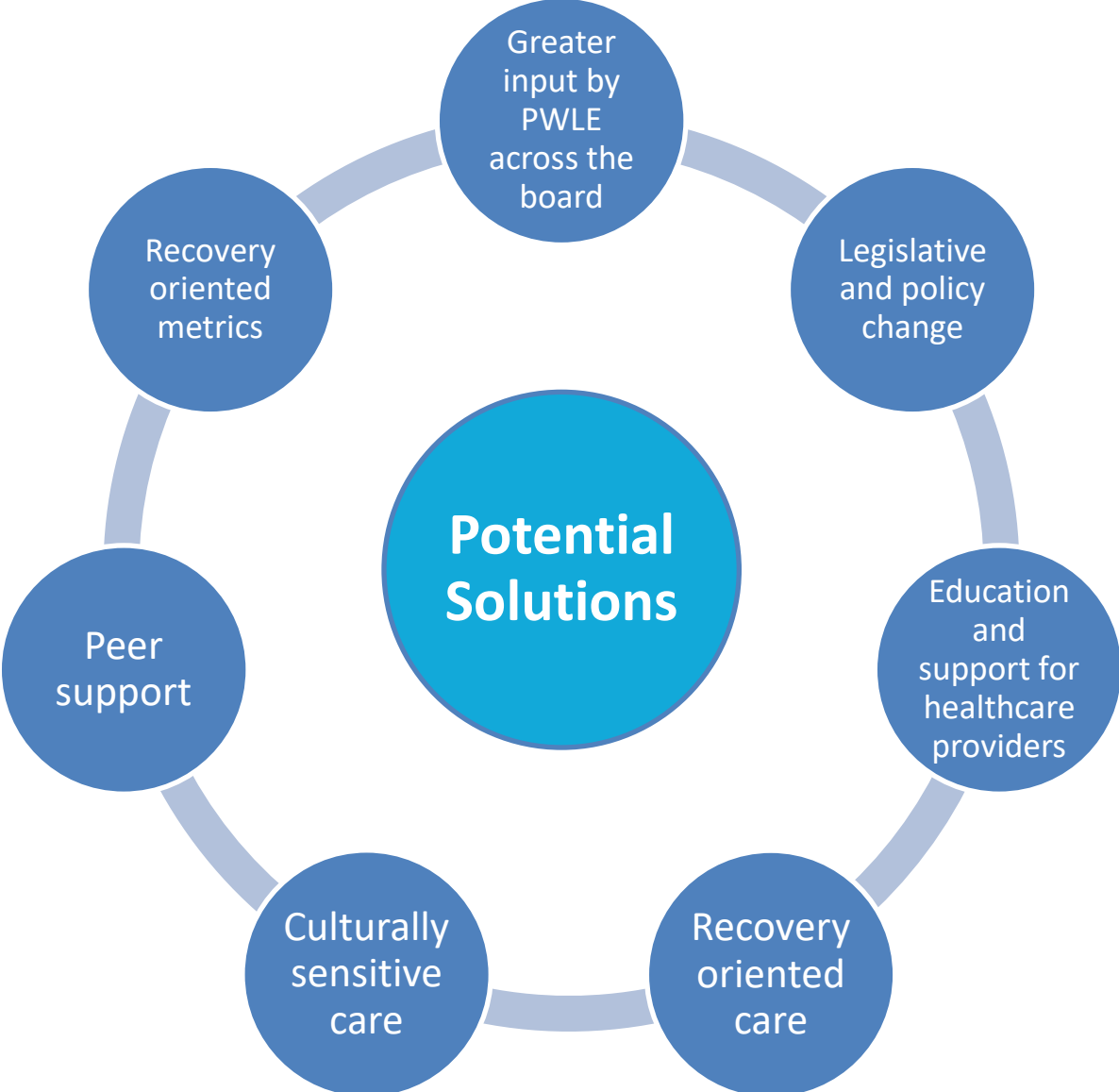
Panelist Presentations

Structural stigma in healthcare settings: What we heard

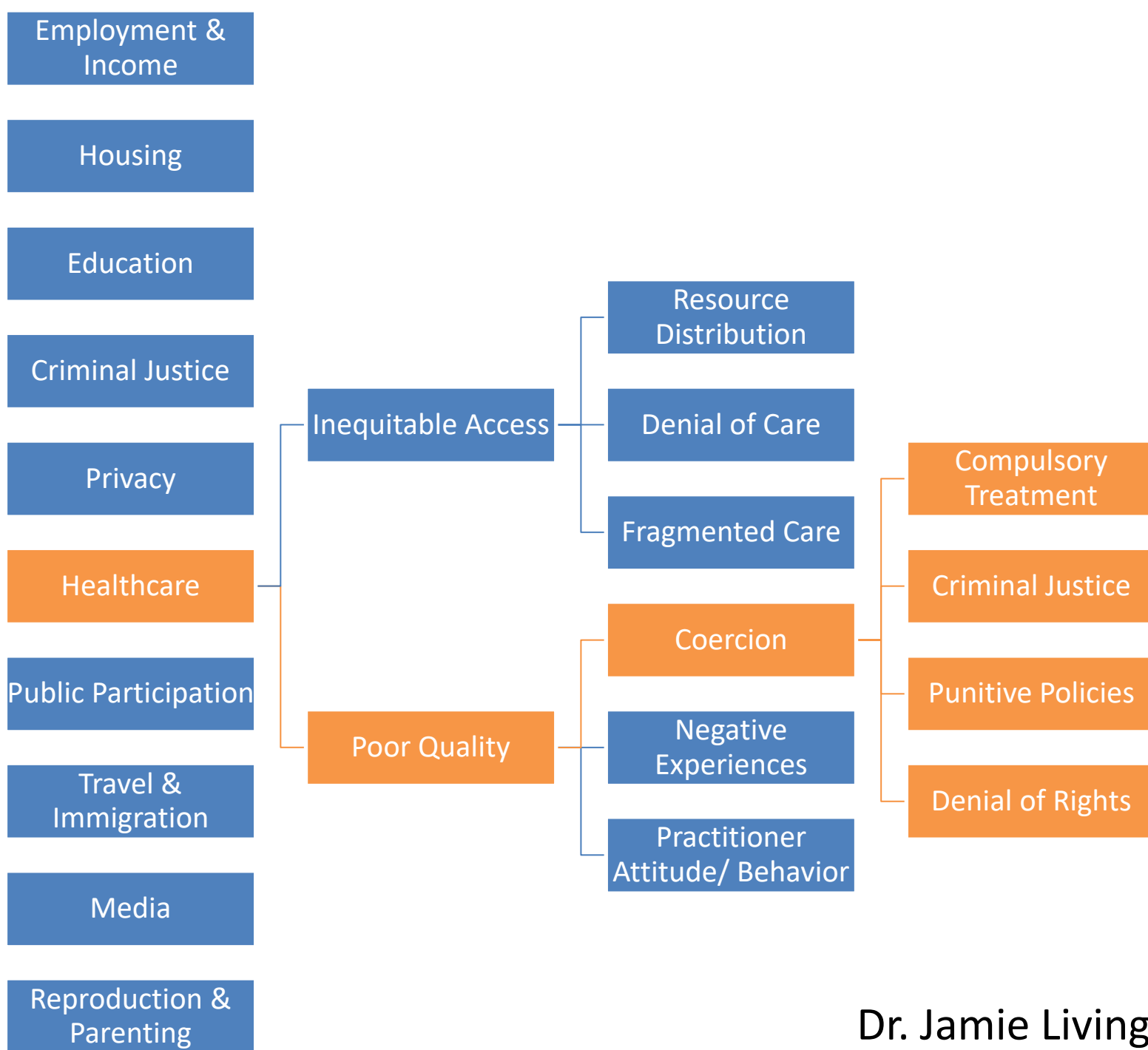


Dr. Heather Stuart

Structural stigma in healthcare settings: What we heard



Dr. Heather Stuart



Key priorities for dismantling and disrupting mental illness- and addictions-related structural stigma in health-care environments

Improve attitudes and practices of staff, including awareness of implicit bias of structural stigma

Measure/monitor equity and performance on access, quality of care, satisfaction, outcomes, etc.

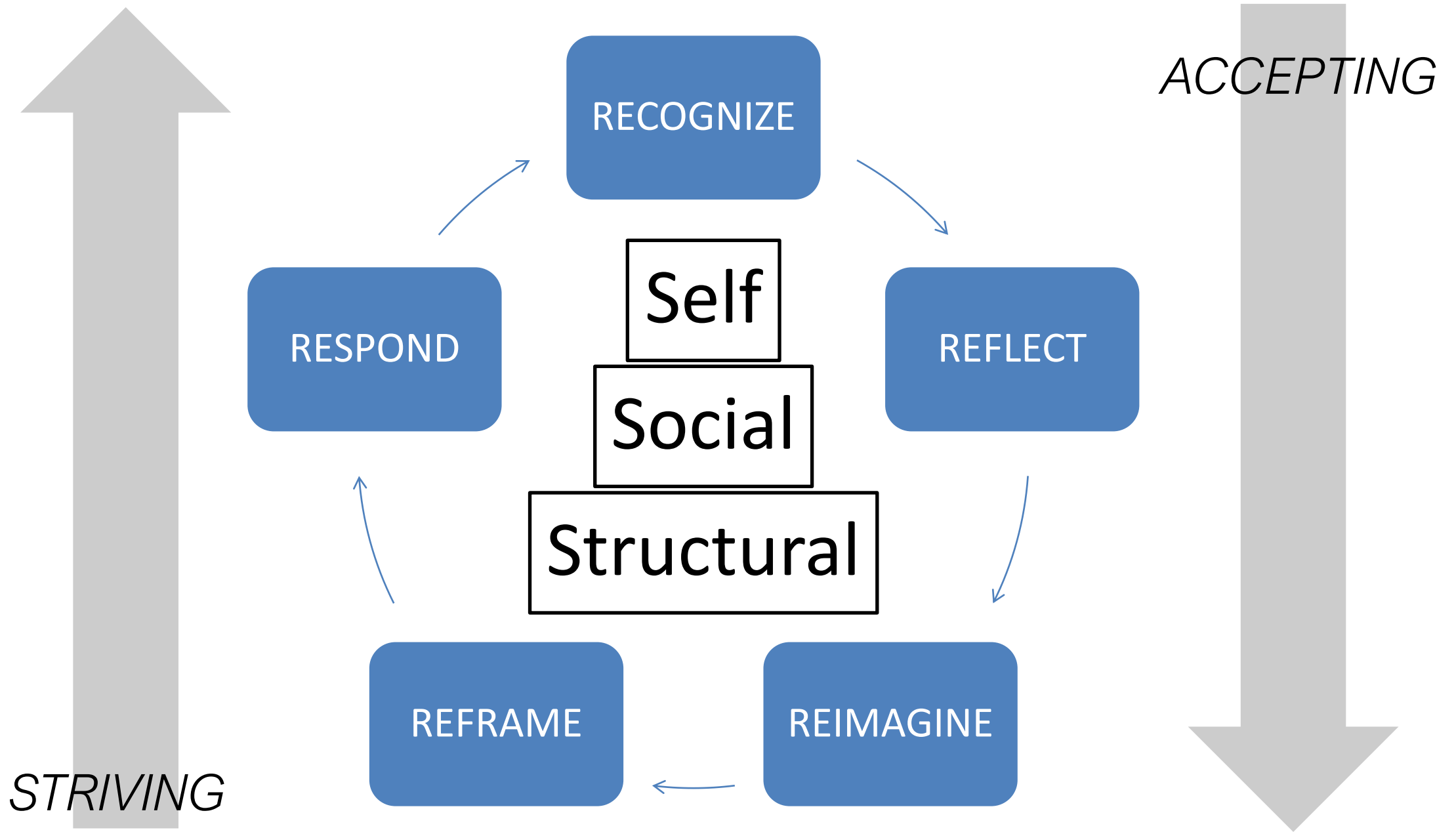
Adopt integrated, recovery-oriented,[†] accessible, client-centred models of care

Commit to equitable resource allocation for MHSU services and research

Ensure meaningful PWLE involvement in service delivery and advisory, research, training, and peer support roles

Implement/enforce stigma-informed legislation, policies, practices, and protections

Build a supporting and stigma-free workplace



Why
Structural
Stigma
Matters

Important to the needs and mandate of health care
leaders and decision makers

How Structural
Stigma is
Manifested in
Clinical
Operations

Impacts on quality of care

How
Structural
Stigma can be
Transformed

Awareness of implicit systemic cognitive bias

Q & A



Mental Health
Commission
of Canada

Commission de
la santé mentale
du Canada





Mental Health
Commission
of Canada

Commission de
la santé mentale
du Canada

Thank you for joining us today!

access@mentalhealthcommission.ca

www.mentalhealthcommission.ca

Financial contribution from



Health Canada Santé Canada

ORDER OF EXCELLENCE



MENTAL HEALTH AT WORK® RECIPIENT

How did we do?

Please take a few moments to answer the following questions